

HEATH GATE

ASHLEY ROAD · HALE

*a most desirable
location...*



exceed your expectations

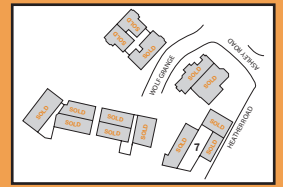
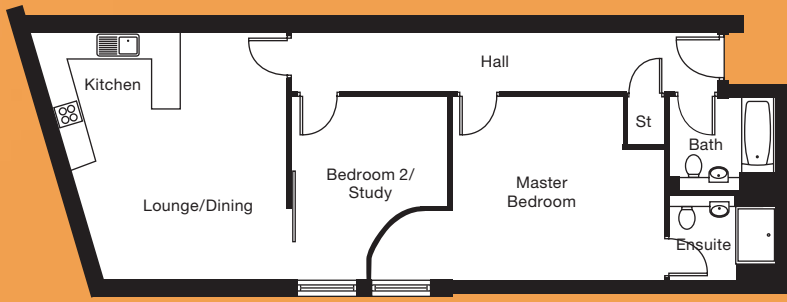
HEATH GATE IS AN EXCLUSIVE RESIDENTIAL DEVELOPMENT OF 40 LUXURY ONE, TWO AND THREE BEDROOM APARTMENTS IN THE POPULAR LOCATION OF HALE, GREATER MANCHESTER. ASPIRATIONAL LIVING IN AN ATTRACTIVE SETTING

Heath Gate is a gated luxury residential complex set in beautifully cared for gardens. The grounds surrounding the development are beautifully landscaped, offering a relaxing and tranquil setting in which to relax. Situated on the corner of Heather and Ashley Road in an established residential neighbourhood, and within easy walking distance of the town centre and the nearby railway station - affording it an easy commute to Manchester city centre, Heath Gate offers the opportunity to establish a secluded and stylish home base within easy reach of Manchester's vibrant city life.

With an emphasis on modern design Heath Gate is designer living with exceptional finishes and fittings for the most discerning occupier. The 40 apartments are being built to the highest specification offering modern, spacious accommodation. Two and three bedroom apartments include a fully fitted kitchen with granite worktops and a stylish ensuite bathroom.



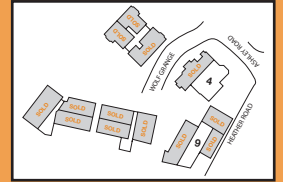
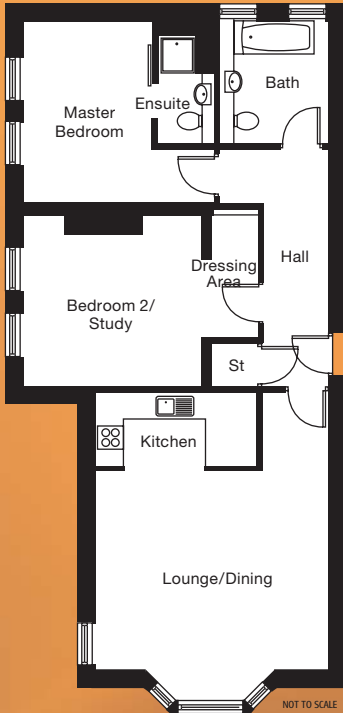
GROUND FLOOR



Apartment 7
2 BEDROOM APARTMENT - 834 SQ FT

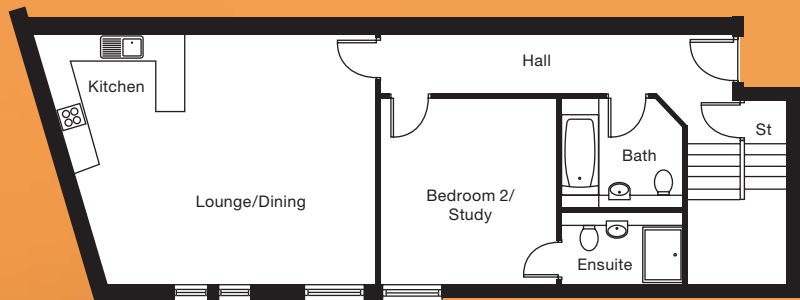
NOT TO SCALE

FIRST FLOOR



Apartment 4
2 BEDROOM APARTMENT - 961 SQ FT

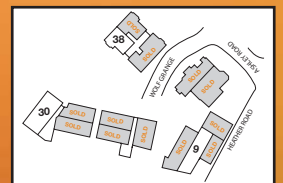
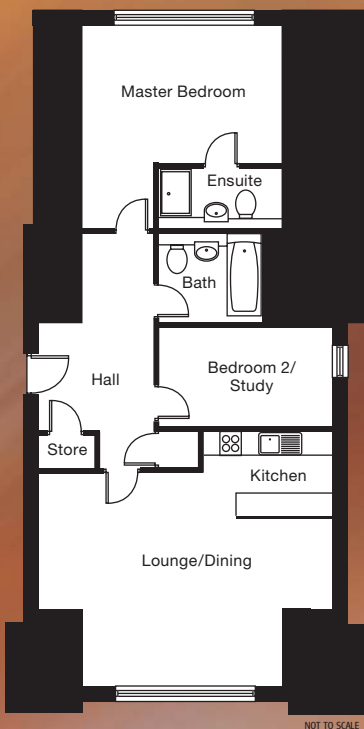
NOT TO SCALE



Apartment 9
2 BEDROOM DUPLEX APARTMENT - 1130 SQ FT

NOT TO SCALE

SECOND FLOOR



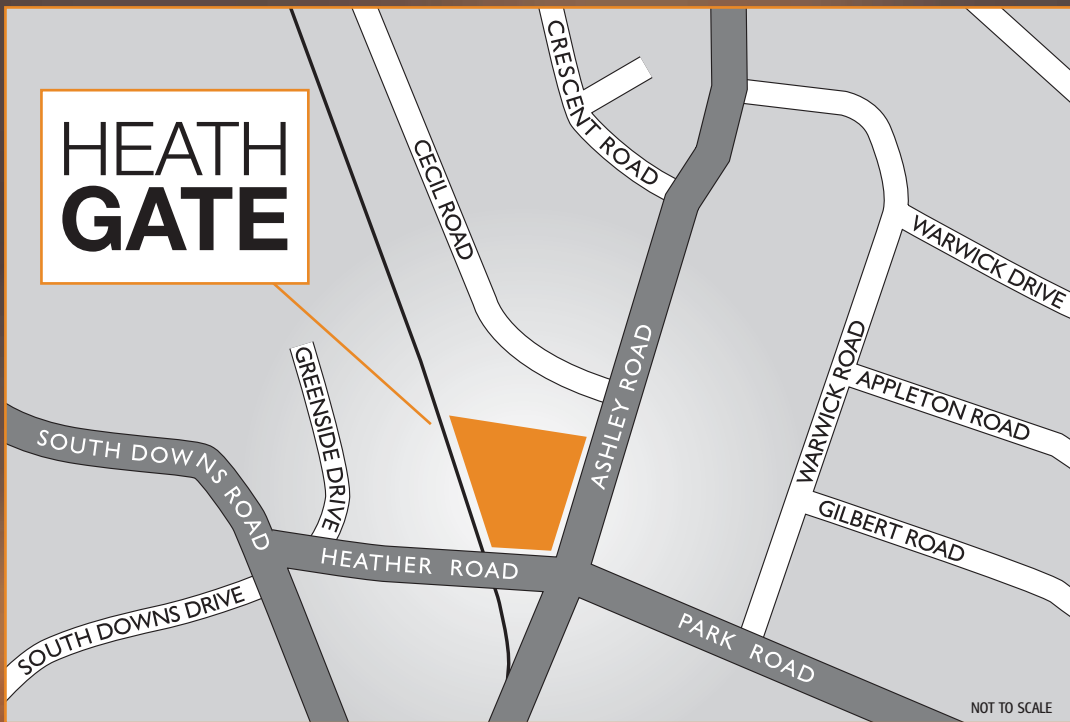
Apartment 30
2 BEDROOM APARTMENT - 1003 SQ FT

NOT TO SCALE



Apartment 38
2 BEDROOM APARTMENT - 652 SQ FT

NOT TO SCALE



Maro Developments Ltd
Lower Meadow Road, Brooke Park, Wilmslow, Cheshire SK9 3LP
Tel: 0845 402 8382 (low call rate) www.marodev.co.uk

The particulars contained in this brochure are believed to be correct but cannot be guaranteed.
All liability in negligence or otherwise, for any loss arising from the use of these particulars is hereby excluded.

Designed and produced by Stratford Marketing Limited of Lichfield Tel: 01543 263942